

# FOOD MENU



S A I R U H I L L R E S O R T S L I M I T E D



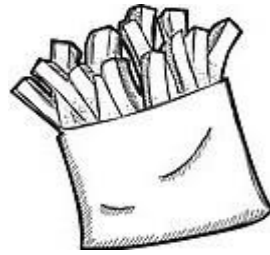
---

## OUR 'GREEN' APPROACH

---

- **RAIN WATER HARVESTING & REUSE.**
- **GRAY WATER RECYCLING.**
- **FOOD PREPARED FROM ORGANICALLY GROWN HERBS & VEGETABLES; GROWN ON SITE AND PROCURED BY LOCALS.**
- **MINIMUM CONSUMPTION OF NATURAL RESOURCES, PROPER WASTE MANAGEMENT AND PROTECTION OF BIO-DIVERSITY.**
- **PROMOTING LOCAL CULTURE & TRADITIONAL PRACTICES.**

\*\*OUR 'GREEN' APPROACH IS UNDER PROGRESS.\*\*



## AAPETIZERS

(HAPPY HOUR) 05:30 PM TO 10:00 PM

1.	FRENCH FRIES	<b>160/-</b>
2.	PRAWN ON TOAST (2PCS)	<b>240/-</b>
3.	CHICKEN ON TOAST (2PCS)	<b>210/-</b>
4.	CHICKEN CASHEW-NUT SALAD	<b>390/-</b>
5.	GREEN MIXED SALAD	<b>125/-</b>
6.	COLE-SLAW SALAD	<b>250/-</b>
7.	CASHEW-NUT SALAD	<b>310/-</b>
8.	RAITA YOGURT SALAD	<b>170/-</b>
9.	THAI SOUP	<b>250/-</b>
10.	THAI CLEAR SOUP	<b>250/-</b>
11.	CHICKEN CREAM OF MUSHROM SOUP	<b>310/-</b>
12.	CHICKEN CORN SOUP	<b>210/-</b>
13.	VEGETABLE CLEAR SOUP	<b>180/-</b>
14.	HOT & SOUR SOUP	<b>250/-</b>
15.	SWEET & SOUR SOUP	<b>250/-</b>

" NB : ALL PRICE ARE SUBJECTED TO 10% SERVICE CHARGE "

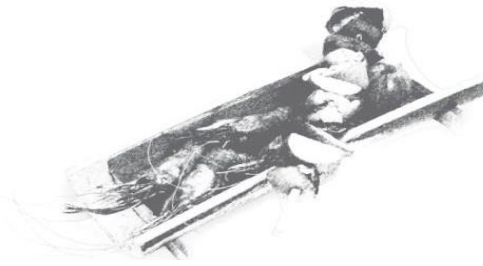


## SNACKS

(HAPPY HOUR) 05:30 PM TO 07:30 PM

1.	PALIN CAKE 1Pcs	<b>45/-</b>
2.	CHICKEN SANDWICH	<b>220/-</b>
3.	EGG SANDWICH	<b>185/-</b>
4.	CLUB SANDWICH	<b>280/-</b>
5.	VEGETABLES PAKORA (4Pcs)	<b>165/-</b>
6.	VEGETABLES CUTLET (2Pcs)	<b>250/-</b>
7.	CHICKEN CUTLET (2Pcs)	<b>280/-</b>
8.	HOT & CRISPY FRIED CHICKEN (2Pcs)	<b>260/-</b>
9.	THAI FRIED CHICKEN (6Pcs)	<b>350/-</b>
10.	CHICKEN SAUSAGE (2Pcs)	<b>150/-</b>
11.	CHICKEN SPRING ROLL (2Pcs)	<b>190/-</b>
12.	VEGETABLES SRING ROLL (2Pcs)	<b>150/-</b>
13.	CHICKEN MEAT BALLS (6Pcs)	<b>350/-</b>
14.	MUGLAI PARATHA	<b>230/-</b>
15.	FRIED PRAWN (4Pcs)	<b>325/-</b>

" NB : ALL PRICE ARE SUBJECTED TO 10% SERVICE CHARGE "



## LOCAL TRADITIONAL FOOD

AVAILABLE ONLY FOR LUNCH & DINNER

1.	BATABI RICE	<b>310/-</b>
2.	CHICKEN TINOLA	<b>420/-</b>
3.	CHICKEN CHUTNEY	<b>380/-</b>
4.	SAIRU VEGETABLE	<b>250/-</b>
5.	PINNACLE	<b>675/-</b>
6.	MORONG SAMBHAR	<b>590/-</b>
7.	TIVA SUGUNI	<b>350/-</b>
8.	SMALL FISH LOCAL	<b>520/-</b>
9.	KARALLAN TALAPIA FISH	<b>380/-</b>
10.	BAMBOO CHICKEN FARM WHOLE	<b>1290/-</b>
11.	BAMBOO CHICKEN LOCAL WHOLE	<b>1650/-</b>
12.	STEAM KORAL	<b>1650/-</b>
13.	BABA GANUSH	<b>250/-</b>
14.	LOITTA FRY	<b>230/-</b>

" NB : ALL PRICE ARE SUBJECTED TO 10% SERVICE CHARGE "



## BANGLADESHI CUISINE

AVAILABLE ONLY FOR LUNCH & DINNER

1.	PLAIN RICE	<b>85/-</b>
2.	ALU BHORTA	<b>75/-</b>
3.	BEGUN BHORTA/BHAJA	<b>75/-</b>
4.	EGG BHORTA	<b>85/-</b>
5.	CHINGRI BHORTA	<b>120/-</b>
6.	MIXED VEGETABLE	<b>165/-</b>
7.	FISH BHORTA	<b>140/-</b>
8.	SHUTKI BHUNA (Loita)	<b>250/-</b>
9.	TALAPIA FISH FRY	<b>275/-</b>
10.	TALAPIA (Bhuna/Dopiaza)	<b>320/-</b>
11.	RUI FISH FRY	<b>340/-</b>
12.	RUI FISH (Bhuna/Dopiaza)	<b>380/-</b>
13.	KORAL FISH FRY	<b>380/-</b>
14.	KORAL FISH (Dopiaza/Bhuna)	<b>430/-</b>
15.	RUPCHANDA FRY	<b>650/-</b>
16.	RUPCHANDA (Dopiza/Bhuna)	<b>680/-</b>

" NB : ALL PRICE ARE SUBJECTED TO 10% SERVICE CHARGE "



## BANGLADESHI CUISINE

AVAILABLE ONLY FOR LUNCH & DINNER

17.	PRAWN BHUNA	<b>450/-</b>
18.	PRAWN TOMATO CURRY	<b>450/-</b>
19.	CHICKEN POTATO CURRY (LOCAL)	<b>410/-</b>
20.	CHICKEN BHUNA (LOCAL)	<b>410/-</b>
21.	CHICKEN REZALA (LOCAL)	<b>410/-</b>
22.	CHICKEN POTATO CURRY (FARM)	<b>350/-</b>
23.	CHICKEN BHUNA (FARM)	<b>320/-</b>
24.	CHICKEN REZALA (FARM)	<b>350/-</b>
25.	BEEF BHUNA	<b>550/-</b>
26.	BEEF ACHARI	<b>580/-</b>
27.	BEEF KALA BHUNA	<b>620/-</b>
28.	MUTTON POTATO CURRY	<b>710/-</b>
29.	MUTTON BHUNA	<b>690/-</b>
30.	MUTTON REZALA	<b>710/-</b>
31.	DAAL (PLAIN)	<b>65/-</b>
32.	DAAL (THICK)	<b>85/-</b>

" NB : ALL PRICE ARE SUBJECTED TO 10% SERVICE CHARGE "



## CHINESE CUISINE

AVAILABLE ONLY FOR LUNCH & DINNER

1.	VEGETABLE EGG FRIED RICE	<b>310/-</b>
2.	CHICKEN FRIED RICE	<b>410/-</b>
3.	PRAWN FRIED RICE	<b>430/-</b>
4.	SPECIAL FRIED RICE	<b>480/-</b>
5.	CHICKEN CHOWMEIN	<b>370/-</b>
6.	PRAWN CHOWMEIN	<b>410/-</b>
7.	SPECIAL CHOWMEIN	<b>450/-</b>
8.	AMERICAN CHOP SUEY (1:1)	<b>350/-</b>
9.	MIXED VEGETABLE	<b>270/-</b>
10.	CHICKEN VEGETABLE	<b>350/-</b>
11.	CHICKEN CHILLI ONION	<b>430/-</b>
12.	SWEET & SOUR CHICKEN	<b>450/-</b>
13.	CHICKEN SIZZLING	<b>610/-</b>
14.	PRAWN CHILLI ONION	<b>480/-</b>
15.	HOT GARLIC PRAWN	<b>480/-</b>
16.	SWEET & SOUR PRAWN	<b>490/-</b>
17.	HOT & SOUR PRAWN	<b>490/-</b>
18.	PRAWN SIZZLING	<b>720/-</b>
19.	BEEF CHILLI ONION	<b>450/-</b>
20.	BEEF SIZZLING	<b>750/-</b>

" NB : ALL PRICE ARE SUBJECTED TO 10% SERVICE CHARGE "



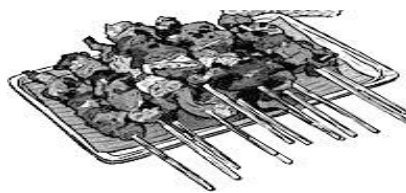


## KHICHURI & BIRYANI ITEM

AVAILABLE ONLY FOR LUNCH & DINNER

1.	PLAIN BHUNA KHICHURI	<b>190/-</b>
2.	EGG KHICHURI	<b>250/-</b>
3.	CHICKEN KHICHURI	<b>480/-</b>
4.	BEEF KHICHURI	<b>580/-</b>
5.	PRAWN KHICHURI	<b>580/-</b>
6.	VEGETBALE JOLA KICHURI	<b>290/-</b>
7.	CHICKEN BIRYANI	<b>520/-</b>
8.	BEEF BIRYANI	<b>580/-</b>
9.	PLAIN JOLA KHICHURI	<b>290/-</b>
10.	PRAWN BIRYANI	<b>580/-</b>
11.	PLAIN POLAO	<b>220/-</b>
12.	MOROG POLAO	<b>580/-</b>
13.	HYDERABADI DUM BIRYANI	<b>1200/-</b>
14.	MUTTON BIRYANI	<b>1450/-</b>

" NB : ALL PRICE ARE SUBJECTED TO 10% SERVICE CHARGE "



## INDIAN & B.B.Q CUISINE

AVAILABLE ONLY FOR DINNER

1.	PLAIN NAAN	<b>65/-</b>
2.	GARLIC NAAN	<b>75/-</b>
3.	BUTTER NAAN	<b>75/-</b>
4.	LACHCHA PARATHA	<b>75/-</b>
5.	LUCHI PARATHA	<b>70/-</b>
6.	PLAIN PARATHA	<b>60/-</b>
7.	CHICKEN B.B.Q WHOLE (FARM)	<b>1250/-</b>
8.	CHICKEN B.B.Q HALF (FARM)	<b>700/-</b>
9.	KORAL B.B.Q (WHOLE FISH)	<b>1610/-</b>
10.	RUPCHANDA B.B.Q (PER PS.)	<b>690/-</b>
11.	GRILL PRAWN	<b>750/-</b>
12.	VEGETABLE SHASHLIK (2-Stick)	<b>320/-</b>
13.	GRILL VEGETBALES	<b>250/-</b>
14.	TANDORI BUTTER CHICKEN	<b>650/-</b>
15.	HANDI BEEF	<b>1200/-</b>
16.	CHICKEN CHAMPARAN	<b>990/-</b>
17.	CHANA MASALA	<b>350/-</b>

" NB : ALL PRICE ARE SUBJECTED TO 10% SERVICE CHARGE "



## DESSERT ITEM

ALL DAY

1.	SUJI HALUA	80/-
2.	FIRNEE	80/-
3.	SWEET YOGURT	120/-
4.	CARAMEL PUDDING	130/-
5.	ROBUSTO CHOCOLATE (STICK)	80/-
6.	CARNIVAL VANILLA (CONE)	50/-
7.	CARNIVAL BUTTER SCOTCH (CONE)	60/-
8.	CARNIVAL STEAWBERRY (CONE)	60/-
9.	CHOCODELIGHT (CONE)	50/-
10.	POLAR KHIR (CUP)	60/-
11.	POLAR DOI (CUP)	60/-
12.	VANILLA (CUP)	25/-
13.	CRUNCHIE (STICK)	45/-
14.	ROCKS (STICK)	45/-
15.	CHOCOBAR (STICK)	30/-
16.	CHOCOLATE PRIME (CUP)	60/-
17.	ICE-CREAM (2-SCOOP)	140/-
18.	ICE-CREAM MIXED (2-SCOOP)	150/-

" NB : ALL PRICE ARE SUBJECTED TO 10% SERVICE CHARGE "



## BEVERAGES

ALL DAY

1.	WATER (500mL)	<b>20/-</b>
2.	WATER (1500mL)	<b>35/-</b>
3.	COKE (CAN)	<b>50/-</b>
4.	SPRITE (CAN)	<b>50/-</b>
5.	FANTA (CAN)	<b>50/-</b>
6.	DIET COKE (CAN)	<b>50/-</b>
7.	7-UP (CAN)	<b>50/-</b>
8.	MIRINDA (CAN)	<b>50/-</b>
9.	PEPSI (CAN)	<b>50/-</b>
10.	MOUNTAIN DEW (CAN)	<b>50/-</b>
11.	DIET PEPSI (CAN)	<b>50/-</b>
12.	LEMONADE	<b>230/-</b>
13.	FRESH JUICE (Papaya)	<b>275/-</b>
14.	FRESH JUICE (Orange)	<b>350/-</b>
15.	FRESH JUICE (watermelon)	<b>290/-</b>
16.	FRESH JUICE (Mango)	<b>350/-</b>
17.	FRESH JUICE (Pineapple)	<b>275/-</b>

" NB : ALL PRICE ARE SUBJECTED TO 10% SERVICE CHARGE "



## BEVERAGES

ALL DAY

18.	MILK SHAKE (Banana)	<b>210/-</b>
19.	MILK SHAKE (Oreo)	<b>280/-</b>
20.	MILK SHAKE (Mango)	<b>250/-</b>
21.	MILK SHAKE (Strawberry)	<b>250/-</b>
22.	MILK SHAKE (Chocolate)	<b>250/-</b>
23.	MILK SHAKE (Vanilla)	<b>250/-</b>
24.	BLACK TEA	<b>55/-</b>
25.	GREEN TEA	<b>55/-</b>
26.	MASALA TEA	<b>65/-</b>
27.	ICE-TEA	<b>150/-</b>
28.	MILK TEA	<b>55/-</b>
29.	BLACK COFFEE	<b>70/-</b>
30.	REGULAR COFFEE	<b>120/-</b>
31.	CAPPUCCINO	<b>210/-</b>
32.	CAFÉ LATTE	<b>250/-</b>
33.	HOT CHOCOLATE	<b>210/-</b>
34.	HOT MILK	<b>85/-</b>

" NB : ALL PRICE ARE SUBJECTED TO 10% SERVICE CHARGE "



- f** [facebook.com/sairuresort](https://facebook.com/sairuresort)
- @** [instagram.com/sairuresort](https://instagram.com/sairuresort)
- t** [twitter.com/sairuresort](https://twitter.com/sairuresort)
- globe** [sairuresort.com](https://sairuresort.com)
- ✉** [info@sairuresort.com](mailto:info@sairuresort.com)
- in** [linkedin.com/company/sairu-hill-resort](https://linkedin.com/company/sairu-hill-resort)



01847417313  
09619477777

ADDRESS: BARO MILE, CHIMBUK ROAD,  
Y -JUNCTION, SHUALOCK, BANDARBAN

DHAKA ADDRESS: SAFURA TOWER,  
KEMAL ATTATURK AVENUE, BANANI

---

S A I R U H I L L R E S O R T S L I M I T E D